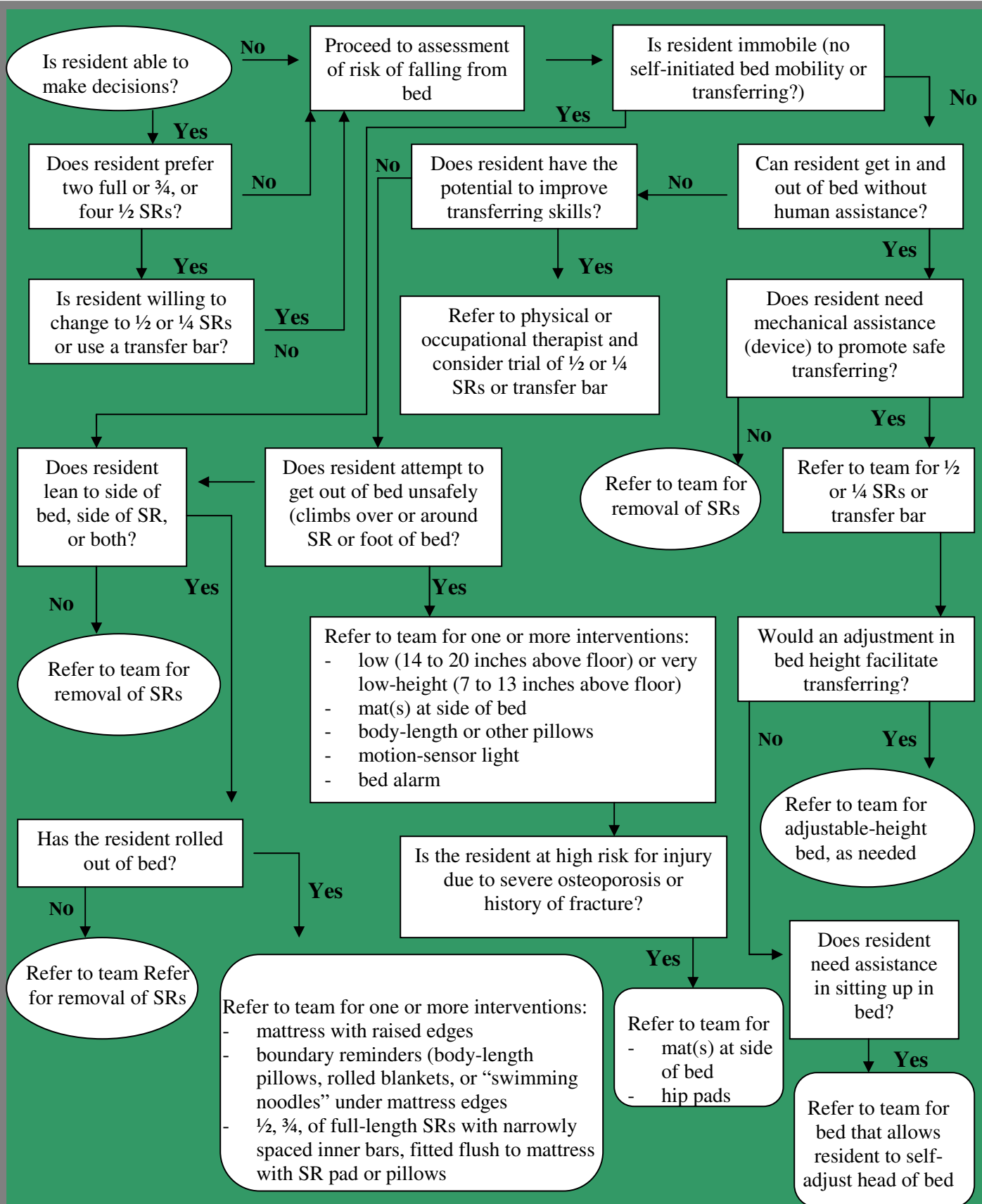


Siderail and Alternative Equipment Intervention Decision Tree



*SR=side rail. "Team" refers to a decision-making person/group as specified by the institution: a multi-disciplinary restraint-reduction team, geriatric-consultation team, rehabilitation department, nurse manager or supervisor, or a gerontologic APN.

Adapted from: Talerico, K.A. & Capezuti, E. (2001). Myths and facts about side rails. *Am J Nurs*, 101:43-48.
[Abstract available at PubMed.](#)